

## Oboe

"Super Mario Theme"

**A** ♩ = 200

## "The Legend Of Zelda - Ocarina of Time"

39 *p*

45 *mf*

50 *accel.*

54  $\text{♩} = 152$  **E** 8

66 "Angry Birds" 8 *f*

80 **F**  $\text{♩} = 120$

83

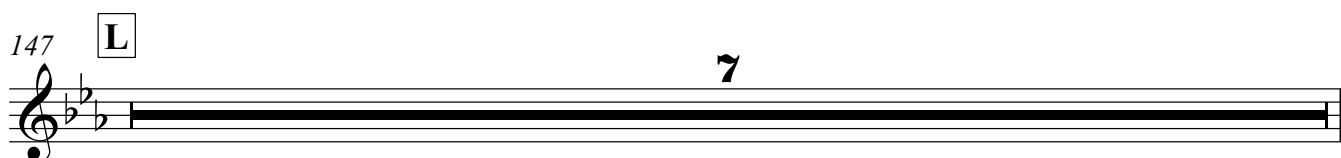
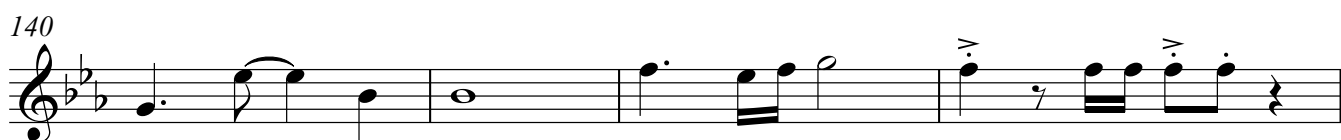
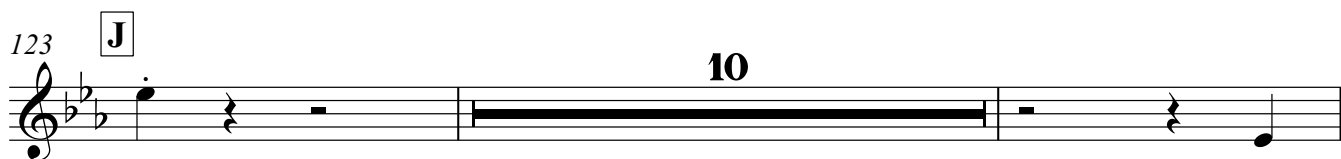
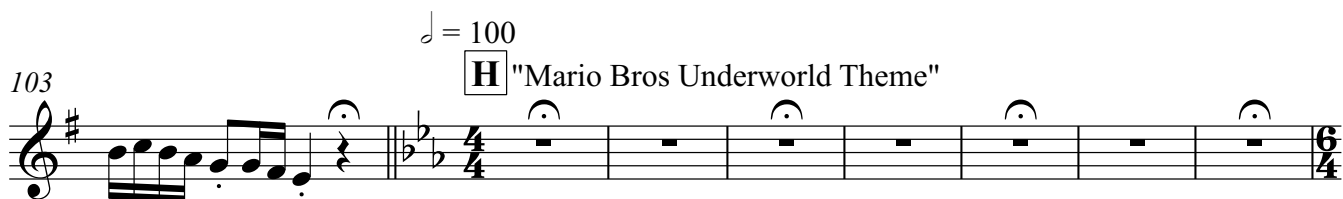
86

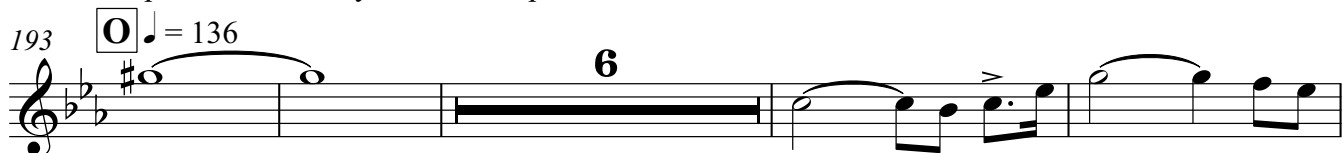
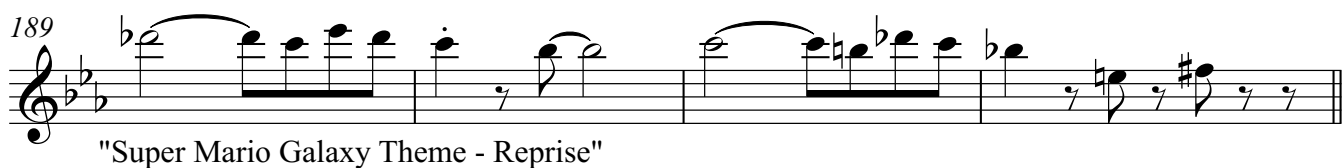
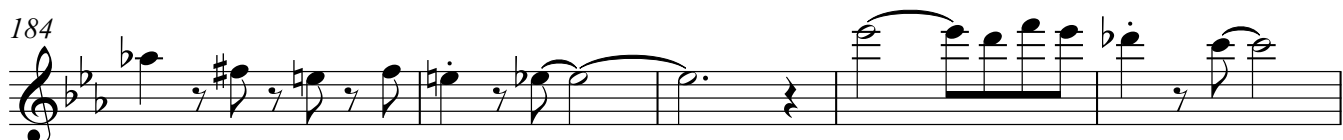
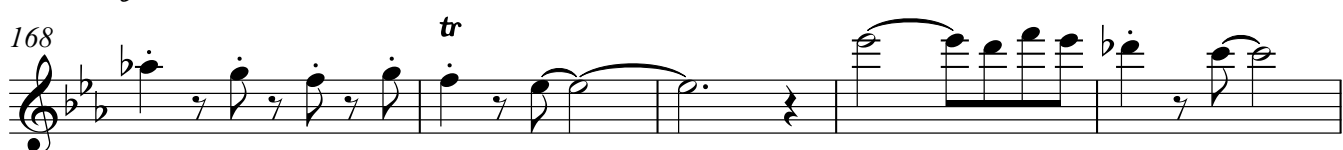
90 **G**

94

97

The musical score for Oboe consists of nine staves of music. The first staff (measures 39-44) features a triplet of eighth notes on a whole note, marked *p*. The second staff (measures 45-49) continues with triplets and a sixteenth note triplet, marked *mf*. The third staff (measures 50-53) includes a triplet of eighth notes, a sixteenth note triplet, and a triplet of eighth notes, marked *accel.*. The fourth staff (measures 54-65) starts with a tempo of  $\text{♩} = 152$  and a key signature of E major, marked with a box 'E'. It features a triplet of eighth notes, a sixteenth note triplet, and a triplet of eighth notes. The fifth staff (measures 66-79) starts with a tempo of  $\text{♩} = 120$  and a key signature of F major, marked with a box 'F'. It features a triplet of eighth notes, a sixteenth note triplet, and a triplet of eighth notes. The sixth staff (measures 80-85) continues with a triplet of eighth notes, a sixteenth note triplet, and a triplet of eighth notes. The seventh staff (measures 86-93) starts with a key signature of G major, marked with a box 'G'. It features a triplet of eighth notes, a sixteenth note triplet, and a triplet of eighth notes. The eighth staff (measures 94-96) continues with a triplet of eighth notes, a sixteenth note triplet, and a triplet of eighth notes. The ninth staff (measures 97-99) continues with a triplet of eighth notes, a sixteenth note triplet, and a triplet of eighth notes.





213



218

